



Annual Report

2013

Fraser Park Sportsville thanks



Table of Contents

Page

Board of Directors & Management Positions	4
Milestones	5
Chairman's Report	6-7
General Manager's Report	8-9
Founding Clubs Contact Details	10-11
Founding Club Reports	
Avalon Rugby Football Club	12
Hutt Valley Dodgers Softball Club	13
Fraser Park Squash	14
Hutt Valley Softball Association	15
Lower Hutt City AFC	16
Naenae Hockey Club	17
The National Hockey Stadium Trust	18
Taita District Cricket Club	19
Membership Numbers	20
Governance Model	21
2013 Financial Statements	22-26
Audit Report	27

Cover Photo

Back row: Trudy Englebreetsen (FPS GM), Garry Davidson (Hutt Valley Softball), Mark Heissenbuttel (FPS Chairman), Mike Mercer (Hutt City Council), Glen Walker (FPS Board), Alister Skene (CFT Chairman), Mayor Ray Wallace, Matt Reid (Hutt City Council), Bill Heaps (FPS Board), Ashley Roper (FPS Board).

Front row: Nick Cooper (Hutt Valley Softball), Collin Gear (Hutt Valley Dodgers Softball), Gary Gosper (Taita Cricket), Phil Steere (Fraser Park Squash), Keith Binnie (National Hockey Stadium Trust), Richard Manson (Naenae Hockey), Craig McWilliam (Naenae Hockey).

Front Centre: Todd London (Avalon Rugby), Glen Kennedy (Avalon Rugby).

Board of Directors & Management Positions

Board of Directors

Appointed Board Members

Mark Heissenbuttel (Chairman)
Peter Clinton (Until October 2013)
Nicole Ferguson (From March 2013)
Anthony Crummy (From March 2013)
Gary Watkins (From July 2012)
Glen Walker (From July 2012)

Elected Board Members

Bill Heaps (Until November 2013)
Ashley Roper (Until November 2013)

General Manager

Trudy Englebrechtsen

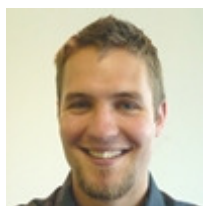
Honorary Auditor

Dennis Quirke

Hutt City Council Officers



Aaron Marsh
Parks Asset Manager



Mike Mercer
Sport Relationship Manager



Matt Reid
General Manager
Community Services



Marcus Sherwood
Divisional Manager
Leisure Active

Milestones



- July 2012:** Gary Watkins and Glen Walker are appointed to the Board.
- August 2012:** Community Facilities Trust inaugural Board appointed.
Council draft the Long Term Integrated Facilities Plan.
- February 2013:** Clubs representatives visit Papatoetoe Sports Centre in Auckland to see 'Sportsville in Action.'
- March 2013:** Anthony Crummy is co-opted and Nicole Cherry is appointed to the Board.
'Sign off packs' and Agreements delivered to clubs.
- April 2013:** Founding members sign Agreements, signaling their commitment to the site plans and removal of existing facilities on Fraser Park.
- May 2013:** Media Launch for Fraser Park Sportsville.
MOU signed by Community Facilities Trust & Hutt City Council.
Draft Reserve Management Plan received by Fraser Park Sportsville.
- June 2013:** Fraser Park Squash and Mitchell Park Squash agree to merge.
Project Control Group established.
The Long Term Integrated Facilities Plan public consultation completed.
- September 2013:** The Long Term Integrated Facilities Plan is adopted by Council.
Mitchell Park Squash apply for membership to Fraser Park Sportsville.



Chairman's Report

It is once again my pleasure to present the 2013 annual report for Fraser Park Sportsville.

The past twelve months represent another significant milestone for Fraser Park Sportsville with all of the founding member clubs & organisations endorsing their support for the redevelopment of Fraser Park. The effort and commitment from the founding members to this process has been very much appreciated. For many founding members the decision to commit to the redevelopment of Fraser Park will be remembered as one of the most important decisions in their history.

All founding members will be well aware of the time and effort they have committed to Sportsville over the past three years. The numerous meetings, workshops and discussion over the future of Fraser Park have finally landed on a concept that we all agree with. Now the hard work starts!

The redevelopment is a massive project that requires considerable effort from all the stakeholders involved. Sportsville is grateful to the Hutt City Council for their support in forming the structure that will ensure that the redevelopment occurs. The formation of the Community Facilities Trust (CFT) as a vehicle to drive the revenue generation strategy and build phase of the Clubhouse and associated artificial turfs is again another important milestone achieved over the past year. The working relationship between the CFT, HCC and FPS is vital to the overall success of the redevelopment.

The planning and consultation is now complete and we simply need to finalise the finer details within the plans, raise the money and complete the redevelopment.

Fraser Park Sportsville will work closely with all founding members to make the concept a reality. It is the boards intention that some of the proposed redevelopment initiatives will commence during 2014 with the initiation of the kick start phase.

From the Boards perspective we have truly moved beyond a conceptual phase and with the redevelopment plans agreed and Sportsville continuing to mature as an organisation we are now entering into a new phase known to the board as 'the design and build phase'.

The current Strategic Plan expired in 2013 and the board have started developing the draft Strategic Plan as we enter into this new phase. The intention is for draft Strategic plan to be shared with clubs and

key stakeholders over the coming few months and to be finalised in early 2014.

From a business as usual perspective I am very pleased to report to all members that Sportsville has operated successfully from a financial and governance stance. The current funding situation as you will all know is very demanding and whilst we have little room to generate revenue we continue to support the activities of Sportsville through the support of Trusts and the Council.

The Sportsville Board has attracted four new Board members during the past year and again the calibre of the new Board members reflects the pride and passion that people within the community place on Sportsville.

As I have mentioned in the past couple of annual reports we are very fortunate to have Trudy leading our organisation. Trudy's determination to ensure clubs are treated equally, that they are informed and that they receive her full support is unquestionable. Much of what we have achieved can be attributed to the drive and expertise of Trudy. I urge you all to read Trudy's report in detail as it gives you a great summary of what Sportsville stands for and has achieved. Page 5 of this report lists the key achievements and highlights of the past year from the boards perspective.

Finally I again thank the founding members for their patience, support and contribution to Sportsville and the redevelopment. The platform has been laid and your board will be ensuring that these efforts are now turned into reality.

It would be remiss of me not to mention the support we have had from the Hutt City Council. As you are all aware Ray Wallace and David Bassett are extremely passionate and behind Fraser Park. This level of support has enabled Matt Reid, Marcus Sherwood, Mike Mercer and Aaron Marsh to establish the structure and support that will not only be a driving force behind the redevelopment but also be there to support Sportsville when the facility is fully operational. In particular, we thank Matt for his unwavering support.

I look forward to catching up with founding member representatives at the AGM or in my travels around Fraser Park.

Mark Heissenbuttel
Chairman



Picture: Fraser Park Sportsville Clubhouse Design Impression

Board Meeting Attendance

1 July 2012 - 30 June 2013										
	16-Jul	13-Aug	10-Sep	8-Oct	11-Dec	11-Feb	10-Mar	8-Apr	6-May	10-Jun
Mark Heissenbuttel	✓	✓	✓	✓	✓	✓	✓	✓	✓	✓
Nicole Ferguson							✓	✓	✓	
Peter Clinton	✓		✓	✓	✓	✓		✓		✓
Anthony Crummy							✓	✓	✓	
Bill Heaps	✓	✓	✓				✓		✓	✓
Ashley Roper	✓	✓	✓	✓	✓	✓	✓	✓	✓	✓
Gary Watkins		✓	✓		✓	✓	✓	✓	✓	✓
Glen Walker		✓	✓	✓	✓	✓		✓	✓	

General Manager's Report

Keeping Focussed

The work undertaken by Fraser Park Sportsville and the Founding Members over the past 3 years culminated in the closing of the consultation phase and signing off Agreements in April this year.

The signing of the Agreements was a significant milestone for Fraser Park Sportsville that signalled the Founding Members commitment to the redevelopment but more importantly the acknowledgement that the existing facilities on site owned by the Founding Members will not be part of the parks future.

We have exciting times ahead tempered with what will be a difficult transition periods whereby park renovations will impact the delivery of every sport. Work will be undertaken by Fraser Park Sportsville to minimise the impact as much as possible and we thank our Founding Members for their patience and focus both to date and in the future.

Long term the park will be an amazing place to play and call 'home' and we need to hold onto that vision while we bear the impact of the renovations over the coming years.

Progress

Work was undertaken by the Giblin Group to develop a Social Impact Report and Revenue Generation Strategy. Both documents remain in draft and will be finalised and implemented in due course.

The Fraser Park reserve Management Plan went out for public consultation mid-year. We hope that our Founding Member clubs and organisations continue to voice support for the project and that the community get behind the redevelopment of Fraser Park.

Annually Fraser Park Sportsville submits to the Hutt City Council Annual Plan and this year was no exception. Thanks to those who attended to show support, it is important that we work collaboratively to ensure Fraser Park Sportsville remains a priority for Hutt City Council.

New Member

Mitchell Park Squash wrote a letter of application for membership to Fraser Park Sportsville in September 2013. Fraser Park Sportsville will work with Mitchell Park over the coming months to secure their

commitment to relocate to the new Fraser Park facility and to establish their interim rights and responsibilities.

Papatoetoe Visit – 16 February 2013

Founding member clubs were invited to visit the Papatoetoe Sports Centre in Auckland to see a Sportsville facility 'in action'.

Fraser Park Sportsville funded the costs associated with sending one representative per club to Auckland and those who attended were able to visualise what Fraser Park Sportsville will be like in the future. This was a very informative and worthwhile visit and the hospitality provided by the Papatoetoe Management Team was very much appreciated.

Sports Awards

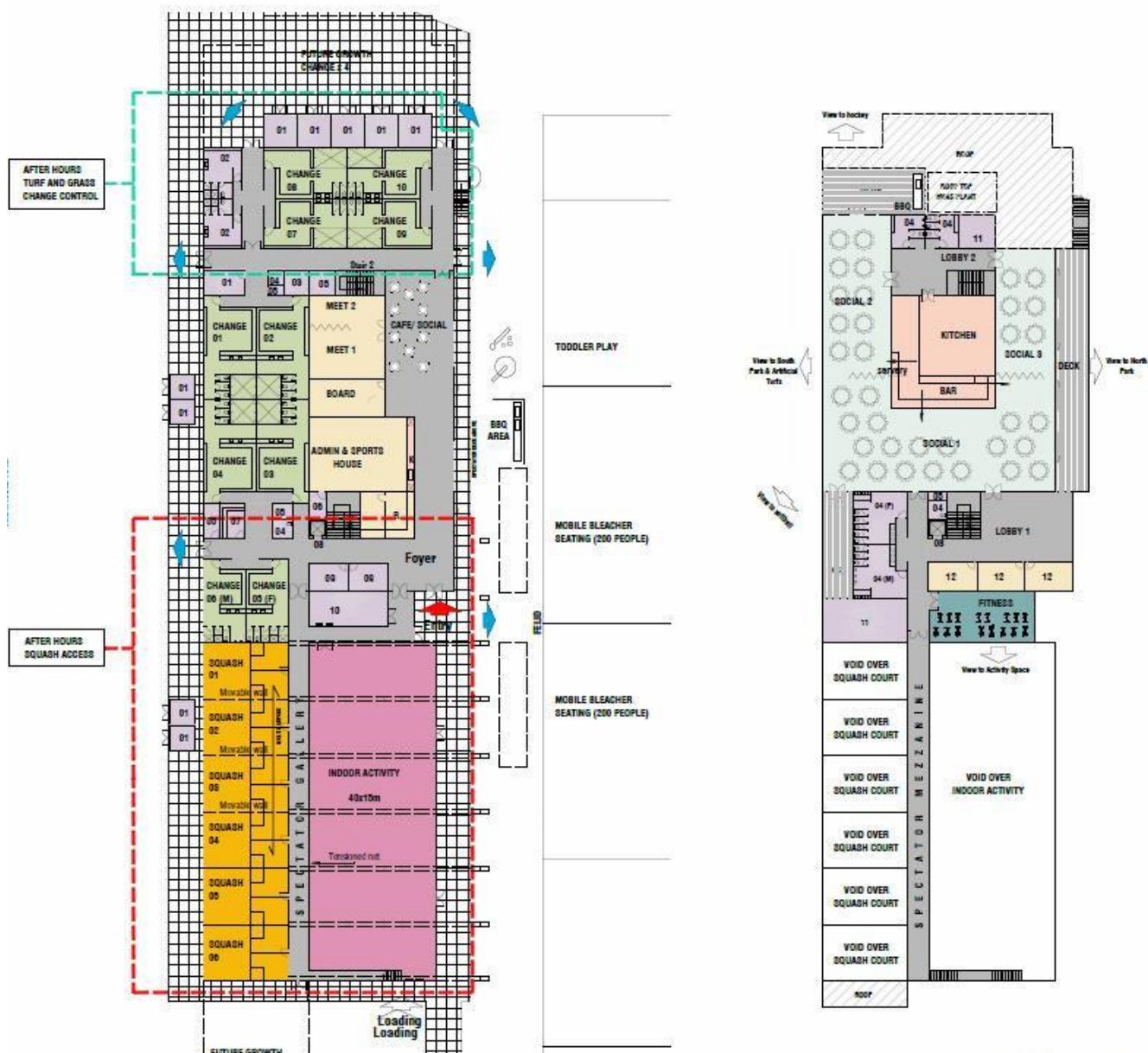
It was great to see Founding Members and Fraser Park Sportsville acknowledged for their success again at this year's Hutt City Sports Awards. Congratulations to Rhys Casley from Dodgers Softball, Sportsman of the Year, the P1 Team, Team of the Year, also from Dodgers and the Fraser Park Sportsville Chairman, Mark Heissenbuttel, Volunteer of the Year.

Club Projects

Again Fraser Park Sportsville was committed to assisting clubs and building club capability, the following projects have been completed or are currently in progress:

Avalon Rugby – assistance provided with School Holiday Programme administration and the Development of surveys for the junior club.
Naenae Hockey – member satisfaction survey and long term strategy completed & administration of the Fraser Park Sports Association accounts.
Dodgers Softball – member satisfaction survey completed, the survey is intended to be part of a wider strategic planning process.
Fraser Park Squash – working through options relating to the merger of Mitchell Park and Fraser Park Squash Clubs.
Lower Hutt City AFC – working through relocation logistics for 2014 relocation to Fraser Park.
Taita Cricket - Administration of the Fraser Park Sports Association accounts.

I look forward to continuing to work in this space next year.



Picture: Clubhouse Floor Plan

Thanks

Special thanks to Aaron Marsh from Hutt City Council for his outstanding efforts working with Fraser Park Sportsville to progress the kick start project.

Thanks to the team of employees and volunteers associated with the various organisations and groups that are committed to driving the Fraser Park Redevelopment forward, thanks to;

- The Fraser Park Sportsville Board
- The Community Facilities Trust Board
- Hutt City Council Officers
- The Project Control Group

Financial Statements

The organisation remains in good financial position, reporting a small surplus at the end of the 2013 financial year.

Special thanks to Hutt City Council for their ongoing contribution to Fraser Park Sportsville operations. Many thanks to New Zealand Community Trust, Infinity Foundation and, Wellington Community for their contributions.

Trudy Englebreetsen
General Manager



Avalon Rugby Football Club

PO Box 30647

Taita

P 04 567 3656

avalonrugby@hotmail.co.nz

www.avalonrugby.co.nz



Hutt Valley Dodgers Softball Club

88 Owens Street

Belmont Domain

P 04 565 0500

doughertytransport@xtra.co.nz

www.sportsground.co.nz/huttvalleydodgers



Fraser Park Squash

PO Box 30203

Lower Hutt

P 04 567 0692

fraserparksquash@gmail.com

www.fraserparksquash.org.nz



Hutt Valley Softball Association

PO Box 35 135

Naenae

P 04 567 5230

huttvalleysoftball@xtra.co.nz

www.sportsground.co.nz/huttvalleysoftball



1921 - 2012

Lower Hutt City AFC

PO Box 38 387
Petone
P 0276 420 036

secretary@lhcafc.org.nz
www.lhcafc.org.nz



Naenae Hockey Club

C/- 52 Oakleigh St
Maungaraki
P 04 586 3330

info@naenaehockey.org
www.naenaehockey.org



PO Box 1608, Wellington

National Hockey Stadium Trust

PO Box 1608
Wellington
P 04 526 5043

keith.binnie@nzrugby.co.nz



Taita Cricket

PO Box 31-212
Lower Hutt
P 04 567 7150

taitacricket@gmail.com
www.taitacricket.org.nz

Avalon Rugby Football Club

The Avalon Rugby Football Club is still very much in a growth phase, investing a considerable amount of time and effort in the junior/youth section, not just within the club but within the local community.

At the start of the 2013 season the club set some key goals:

- To regain Premier status
- For the 2nd team to get back into Senior 1st
- To field a Women's team
- To field a Colts team
- For the 80/80 and the Presidents to continue on where they left off in 2012.

Results

The club didn't quite make it into Premiers for 2014, but they did get close. They made it into the Hardham Cup in the second round and narrowly missed out on the semi finals. The senior teams were made up of a large number of under 21 players, who have now gained a year of experience against some senior opposition, this is good for the club for next season.

The clubs Senior 2nds team didn't quite make it into Senior 1sts, but finished top 4 in both the 1st and 2nd rounds. Special thanks goes to Joe Nepia, Hiko Davies and Graeme Haxton for the work they did.

Avalon Rugby fielded a Women's team for the first time in 3-4 years, special thanks goes to Hiko Davies, Henry Skipper and Taka Harrison for the work they did to keep this group together.

The club also fielded a Colt's team; special thanks go to both Hohepa Pene and Sharon Zillwood who kept this team together.

The 80/80's went ever so close to winning the competition, well done to everyone involved. The Presidents continued on their winning way for most of the season and if they didn't win, they always put up a competitive fight.

Having Scott Waldrom and Aaron Jones at the helm of the first team this year has certainly helped the club gain momentum throughout, their experience, knowledge and enthusiasm has been epic.

With the recent appointment of Scott Waldrom as Coaching Development Officer, the club expects the momentum to continue through the off-season with summer fitness plans being developed for players so that they can hit the ground running in 2014. The club is also expecting to field a very competitive 7's team in the local 7's tournaments through the summer, so watch out for these results to come through.

The club has continued to work hard to form stronger alliances with the local secondary schools by providing training resources and hosting the Hutt Valley Secondary Schools 7's tournament which was extremely successful.

The club's focus is to reclaim its premier status and to do this the club has set some specific goals for 2014 around player recruitment/retention, player skill enhancement, coach/manager up-skilling, and sponsorship

With the advent of the 2014 season, the club is looking to have teams in Senior 1st, Senior 2^{nds}, 80/80's, President's, Colts and women's grades. The club also has a thriving junior section where many of the players from the 11's, 12's and 13's have gone on to represent the Hutt Valley and Wellington.

The club now has a fantastic indoor gym so we are not reliant on the weather, and with this and the successes in 2013, the club has a strong foundation to move into 2014.

Glenn Kennedy
Chairman

Hutt Valley Dodgers Softball Club

The 2012-2013 softball season can be seen as the most successful in the clubs history.

The club fielded the following 7 teams in the senior club competition.

- Premier 1 Men's
- Premier 2 Men's Black
- Premier 2 Men's White
- Presidents
- Under 19's Boys
- Premier 2 Woman
- Major B Woman

The club also fielded 11 junior teams making Hutt Valley Dodgers the largest club in the Valley.

The senior committee also took over the running of the junior club with teams from under 15's down to little league. Michelle Mikara was appointed Junior Convener.

Right through juniors and seniors the club had a huge amount of Hutt Valley Representatives.

The club also had 3 Black Sox Players: Rhys Casley (Captain) Tyson Byrne (Vice captain) and Nik Hayes who won the 2013 ISF World Series held in North Harbour.

The Premier 1 men's team won the New Zealand Club Nationals for the second time in 4 years. They also won the Wellington-Hutt Valley Intercity title for the first time in the clubs history. The team also won the North Island Lion Red Classic.

The team was awarded the Wellington Supreme Sports Club Team of the Year, Hutt Valley Sports Team of the Year and Rhys Casley was awarded Sports Person of the Year.

Our Premier 2 Men's Black won the Hutt Valley competition (on the diamond) and made the final of the Intercity competition. They also won the Miramar Premier 2 men's tournament.

The club was supported by many individual sponsors.

I would like to record the passing away of Pat Hardie who was a life member of the club and contributed many years of service to both the junior and senior the club, she will be greatly missed.

The club committee members were as follows:

Collin Gear	President
Neville Austin	Chairman
Trina Dougherty	Secretary
Michelle Atkins-Gilbert	Treasurer
Raumoa Hutchinson	Club Captain
Michelle Mikara	Junior Convener
Tadak Brejnakowski	Club Manager
Richard Steel	Gear Steward
Sally Thomson	Committee Member

Tadak Brejnakowski
Club Manager



Photo: Robbie Burns (Life Member) with the trophy the Premier 1 men's team won at the Wellington Sports Awards for Club Team of the Year.

Fraser Park Squash Club

The past season has seen a lot happen with Sportsville and as a consequence a possible merger with Mitchell Park Squash Club, the 45th Anniversary, and some success on the squash court with two interclub teams tasting success. Thanks again to committee members and other members of the club that have helped make it a successful year. A major consideration this year has been deciding whether we join with Mitchell Park Squash Club when the new Sportsville clubhouse is built. Mitchell Park has undertaken a significant amount of work to advise their members of the benefits of Sportsville and the impacts on their club. They then had a vote and members agreed to a merger with Fraser Park to form a new Squash Club at the Sportsville Complex. The timing and details are yet to be worked out but the benefits to Wellington Squash should be significant with 6 courts being built and a further 2 courts to be added later.

Due to the possibility that we will not be in the same location in 5 years the Committee decided to hold a 45th anniversary event which consisted of a retro style squash tournament and an evening social event.

Both events were a great success with participants in the squash tournament having to dress up in 70s style gear and play with the old style wooden racquets. It was great to have a foundation member of the squash club, Peter O'Flaherty, participating in the tournament and showing us some skills from the past. It was also great to have so many past members attending the function which included Ewen Chatfield who provided some insight into the squash club when he joined in 1969.

In-house has been held on a regular basis and due to its popularity contributes strongly to the clubs spirit and morale. Thanks to our hardworking bar manager Neil Haxton for organising this.

Membership is always a battle but thanks to Lena Taulima's hard work we have continued to hold our own and last count showed a slight increase in membership to top the 100 mark. It's good to see some new faces in the club participating in club events. Also thanks to our secretary Rebecca Johnson whose organisational skills and efficiency are most appreciated.

Maintenance has continued although with the council loan remaining an issue and with Sportsville in the near future it does not make sense to spend any more than the minimum required to keep club up to standard. Thanks to club manager, Kevin Steere for his efforts.

There are early signs that Sportsville is working in respect of clubs working together. We have had several hockey players playing squash and the Squash Club is launching a 20/20 cricket team under the banner of another Sportsville member, the Taita Cricket Club.

I would like to conclude my report by once again thanking the hard working committee and all other club members who have contributed over the year. As I understand most if not all of the committee members are available to carry on for another year which will allow us to continue the momentum that has developed over the last year.

Phil Steere
President



Hutt Valley Softball Association



Photo: Hutt Valley U11 Boys Team

Thank you all for helping make Softball in the Hutt Valley a success, while it is clear that we are short of volunteers, the team that are putting in the hours are doing a great job and need a big thank you, as we are all volunteers working to make our game successful for today and the future.

I am about to complete my first season back with Softball for some years, while honored to be on the HVSA Board and working with a dedicated team, our sport still needs more people to step up and become a part of the Board or Management Committee.

The Season

Thank you to the clubs, administrators, umpires, statisticians, representative Coaches and Managers, our Development Manager and all the team for making 2012/2013 a successful season.

The successes the Association has had at a regional and club level, must have made Hutt Valley one of the most successful Associations this year.

Strategic Plan

Thank you to Trudy Englebrechtsen for helping put together the HVSA strategic plan, and thank you to all clubs for their involvement with feedback etc. This plan has been a very useful asset, and has kept the Association on task. From this HVSA have employed a Development Manager and are working forward with this plan with clear timelines. The Association is working closely with Softball New Zealand to help with Management and plans moving forward.

Sportsville

It has been a busy year with numerous meetings attended by our board representative Garry Davidson and myself. The initial plans and timelines have all now been agreed by founding clubs and

associations. This culminated in a special meeting held by the association and all clubs voting for the HVSA to agree in principle and sign the document of agreement. The first stage of a new artificial turf being laid should happen in the next 12 months, this is going to be an ongoing process which we will keep you informed of, a big thanks to Garry for the time and effort he has put into this as the amount of paper work and time has been immense, thank you also to Marnie for her work on this.

The Future

With the Black Sox winning the World Series, our club teams doing so well at club Nationals, and our Representative teams doing well. The focus on softball is at an all time high and something we have to ensure we capitalize on.

Hutt Valley is in discussions with the Wellington Softball Association to get Capital Softball up and running again.

Our relationship with NZ Softball has improved dramatically and they are being helpful in helping Hutt Valley move forward, this enhanced relationship will be very good for the Association.

The Association is working on and is committed to providing a leading development program for up and coming players, in schools and other areas and over the coming months the Association is going to need help from members.

This season it has been great to see so many players enjoying our game. I am very pleased to hear from people wanting to help. The end of season survey and debrief meetings, while limited in responses and attendance provided valuable and helpful feedback, thank you to those that took the time to take part. I would like to see a season ahead with a great bunch of people working together with no hidden agendas, helping with solutions to move our sport forward.

We are all volunteers and like the posters said "We Need YOU" with many hands and positive minds we can move forward and ensure our sport is still one of New Zealand's most successful sports.

Nick Cooper
Chairman

Lower Hutt City AFC

Playing Numbers

In 2013 the LHCAFC fielded 25 junior teams and 11 senior teams (9 men's & 2 women's teams). The club had approximately 300 junior players (boys & girls), an 50 First Kicks players (3-6 year olds) and approximately 170 senior players.



Photo: 12th Grade Team

National Squads

The club has gained recognition in several national squads and in the Phoenix School of Excellence. The club has also been successful in getting a number of players who have made or trialed for various World Cups.

We have also had the highest number of women from Wellington clubs selected for the National Women's League.

Chatham Cup

The club had a reasonable run in this year's Chatham Cup, but got knocked out early in the competition.

2013 Playing Results

The club had a reasonably successful playing season. The clubs Capital 1 team won their division and were promoted to Premier in 2014. The Women's Central League team did well in the latter part of their season, finishing in 6th place. The 13th and 14th Grade JPL teams made it through to the Super Six finals, and other junior teams winning the majority of their games. The First Kicks programme (catering for 3-6 year olds) run in the gymnasium was well supported and provides a point of difference.

The juniors participated in the: 7-12 years Western Suburbs Tournament, 7-11 years Wynton Rufer Tournament, 7-14 years Douglas Villa Tournament in the Wairarapa and 11-15 years Taupo Tournament.

The club is about to embark on the 3 Under 19 tournaments during October. These are the Ivan England Tournament (which they won in mid October); the Upper Hutt tournament at the end of October (the club are defending champions from 2012); & the club will also be going to Napier at Labour Weekend and is looking to win this national Under 19 tournament for the 3rd year running.

Rangers Football Schools

The club hosted another (Glasgow) Rangers Soccer School at Fraser Park during April 2013. Approximately 140 boys and girls (ages 7-17 years) attended. This year two young men were selected to attend a one week training opportunity in Scotland within a 12 month period, congratulations to Taylor Schrijvers (LHCAFC's player) and Boon Ozawa from Coastal Spirit in Christchurch. It was a very successful 5 days and the good weather showcased the possibilities for the use of Fraser Park.

Club Generally

The club has a strong and active committee structure in place at both junior and senior levels. Funding is always difficult, and it requires a lot of effort to get funding in place and to prioritise where we spend it to get best value for the club and its participants.

We have continued to run very successful junior academies in the 10-14 age groups and the Football for Schools programmes are popular with primary schools. The club still relies heavily on the generous contribution of time and expertise that the clubs band of volunteers give.

LHCAFC maintains high standards of delivery in all they do, both in their football in the community programmes and in the internal coaching and management roles.

The clubs gym and training areas are extremely well-utilised, these are a major draw card for child & adult enrolments.

The pressure is always on the committee to continue to find good grounds for the clubs teams to play on. It is a fact that good grounds help to produce good players, and a sand based grass pitch for our exclusive use at Fraser Park is still high a high priority!

Jim Baxter

Chairman & President

NaeNae Hockey Club

The Boys

The 2013 season saw 4 teams entered into the open grade competition. The Premier 2 mens team had a tough season this year but have retained their P2 grade for the grading round next season.

The R1 mens team had a challenging start to the season but grew as a team and qualified for the semi-finals of their grade. They played hard and came from 2-1 down to tie the scores at full time. No goals were scored during extra time and the teams were even after the first set of 5 strokes.

Unfortunately, the NaeNae boys lost the semi final in sudden death strokes but should be proud of what they achieved during the season.

The Old Farts were back again this year and were promoted into R2 after the grading round. They started out well, winning many of their games but injuries took their toll towards the end of the season they missed out on a semi-final game.

The R3 mens team, a new addition to the club this year, had a number of players who were giving hockey a go for the first time. The team improved dramatically over the season with many enjoyable encounters. We hope to see players back again next season.



Photo: P2 Men

The Girls

The womens side of the club entered 2 teams into the Wellington Competition this year. Unfortunately, we did not get enough registrations to enter our usual 3 teams.

The P2 women started the competition round strong but as the season progressed the team was hit by various injuries that had a noticeable impact on the team. The girls have retained their P2 position for the grading round of next season and if the team is able to stay together, they should have a successful season next year.



Photo: P2 Women

The R1 womens team changed considerably this year as some players from last season moved into the P2 team and some of the ladies in the R3 team last year stepped up into the R1 team. Being such a new team, it took time to develop combinations but as the season progressed the team started to make huge improvements and were unlucky not to have won more games.

The Juniors

Another successful season for NaeNae. It is always great to see new and emerging talent. Junior teams were entered in both the girls and boys 11-a side format and the new skills based junior programme for young developing players.

Once again the NaeNae boys were able to emerge the victorious as grade winners. The boys had a great season and should be congratulated for their hard work.

Craig McWilliam
President



Foundation for the National Hockey Stadium Trust

The 2011/2012 year for the trust was a challenging one.

The trustees were pleased to be able to hold the turf fees at the previous year's level but that did contribute to some extent to a modest operating loss for the year. The main contributor to the financial result was the increase in maintenance costs and the losses incurred in the operation of the food and beverage services at the NHS Pavilion.

Despite the loss, the Trust retains a strong balance sheet even after the contribution to the building of Maidstone.

During the year, the Trust commissioned a report on the operation of the café and bar which found that hockey players generally felt there needed to be significant improvements in the services provided. The report came up with a range of options that were considered by the Trustees but ultimately the review of the café and bar has been overtaken by a more fundamental look at the way the trust operates.



The Trustees and WHA are currently exploring a proposal which would see the Trust contract out its services to WHA who would then run the operation of the Turfs and facilities with the Trust responsible for raising the funds for replacement turfs and other Trust assets. An independent organisation has been assisting the trust and WHA to bring this proposal to life and it is anticipated that a fuller report will be able to be made at the AGM.

A detailed transition plan is also part of the exercise but whatever happens, WHA and the trust are committed to ensuring there is no disruption to the players and officials during the season.

On a positive note, Maidstone was opened during the year and has been well utilised. It has allowed some times to be freed up on busier turfs and hopefully more enjoyable playing times for many.

Since the year end, a preliminary agreement has been signed committing NHST to FPS subject to further negotiations to be completed by the end of 2013. The NHST also entered into an agreement to contract out a range of operational services to WHA. This included the bar and café at the NHST, maintenance, turf bookings and finances. While it is early days it looks like the new model will see improved services to hockey players throughout the region.

Keith Binnie
Chairman

Taita Cricket Club

Another season finished, but this is not just any season, as the improvement in the club both on the field and off the field has been immense.

The Pearce Cup team under Mark's captaincy has shown what can be done with commitment and another years' experience; second in Twenty/20 competition, 3rd in one day and overall competition (and with an ounce of luck could have been better). Congratulations to Sam Dean, Mark Houghton and Henry Walsh all scoring over 500 runs and to Henry for getting the second most runs in a season in the clubs history with 621.

The second team showed a marked improvement, they just need some consistency next year. The thirds definitely benefited from having both new and more experienced players involved in the team this year. James Ross's team enjoyed the experience of playing intercity, and they will be all the better for the experience. Sharon, and the women's team, experienced their first wins and with their new learning and improvement it can only be more impressive next year.

Next year has the potential to be one of the best in our history.

Committee

We have again benefited from having a hard working committee lead by Gary Gosper. Thank you to all the people who assist the club by working outside committee. A special thank you to everyone who helped out on the bar over the season.

We were lucky enough to have Nick join the club as our Coaching Co-ordinator, and in one year he made a big impact. It is with regret that Nick has decided to return to Auckland next year, on behalf of the club thank you for all that you have done.

Fraser Park Sportsville

At a special AGM in April we voted unanimously to become a founding member of Sportsville. Members have had the opportunity to view the plans and perspectives for the development over recent months; there are exciting times ahead for the club as we transition from our current clubrooms. It will be imperative that we do not lose sight of the end goal - that we do all we can to ensure that the Sportsville concept is successful, and we get in behind the venture. At the same time we need to ensure that we do not lose the clubs identity, our fore members made the club what it is today,

tradition, loyalty and identity are what make our club successful.

Finally

Many thanks to Anthony Crummy, Dave Scoot and everyone else who helped and volunteered in making sure that the Titanium lunch was again a success. It was due to its success that we were able to make a good donation to the Angus Little fund. A very special thanks to the ladies in the Kitchen (and Ian) for the wonderful meal.

Thank you to the non-playing members who came along and supported the teams throughout the season.

We hope to see more familiar faces around next season. Please encourage all our past players and supporters to turn up regularly. The club needs you, both from a social point of view, but more importantly the teams like seeing you on the balcony or walking the boundary.

Thank you to all our sponsors Kevin Dee Reality, Maidstone Sports and especially our naming rights major sponsor Petone Radiators. Also to all the other various funding organisations who have supported us. It was good to see our members continue to enjoy the Station Village hospitality, please ensure you advise them you are from Taita Cricket when you visit.

Please support all our sponsors whenever you can, it is their financial support that helps make cricket affordable.

I look forward to seeing you all at the clubrooms and sharing just 'one more' with as many of you as I can.

Mark Jacobson
President

Membership Numbers

Club	Juniors	Seniors	Non Playing	Total
Avalon Rugby	188	166	97	451
Fraser Park Squash	12	86	7	105
Hutt Valley Dodgers Softball	118	65	37	220
Lower Hutt City AFC	354	170	371	895
Naenae Hockey	54	79	20	153
Taita Cricket	38	110	40	188
Total	742	676	572	1990

Governance Model

Hutt City Council (HCC)

- Setting the City's Vision for Community Infrastructure inclusive of Sport and Rec Facilities
- Stakeholders and project investors
- Established CCO to deliver vision

The Leisure Active Division, Hutt City Council activated the Sportsville Initiative. The Sportsville project now sits across several teams/divisions, but in main is led by the GM of Community Services, Matt Reid and Leisure Active Divisional Manager, Marcus Sherwood.

The CFT was established by Hutt City Council (HCC) in August 2012 as a Council Controlled Organisation to promote, develop, own, operate, and maintain recreational, leisure, and community facilities in Hutt City.

Over the next twenty years, a number of facilities in Hutt City will have to be upgraded or replaced. Changing preferences in the community for the way recreation, leisure, and community services are delivered led HCC to adopt an integrated facilities approach to new developments, which will allow for a range of services to be accessed in one place. The Taita Sport and Community Centre, Walter Middenhall development and Fraser Park Sportsville developments are upcoming developments that will follow the integrated facilities model.

At this stage, Parks Division at HCC will continue to be responsible for the management and maintenance of the grounds.

HCC staff will oversee and work alongside FPS to finalise the Sportsville operating model and budgets.

Community Facilities Trust (CFT)

- Project Fundraisers
- Role is facility development
- Owners of new facilities developed

The main role of the CFT is to develop a range of fit for purpose, leisure, recreation, and community facilities that are attractive to the residents and visitors of Hutt City. The CFT will carry out fundraising work to attract donations for these developments from philanthropic organisations and the community. The Trust will do this by acting as a voice for community facilities in Hutt City, using the skills and expertise its trustees bring from valuable experience in business, asset management, and community affiliation.

The CFT will own the Fraser Park Sportsville Clubhouse and artificial surfaces and lease them to Fraser Park Sportsville to manage. The CFT's main role is to develop infrastructure across the city.

Fraser Park Sportsville (FPS)

- Representing the interests of founding members
- Role is facility Management
- Responsible to the HCC and CFT

FPS role is to manage the new facility to ensure that member needs are met and the facility is financially viable. FPS does this in consultation with member clubs via the club user group and user agreement.

FPS is responsible for the operating model, day to day management and maintenance of the facility and turfs.

FPS is accountable to Hutt City Council for the operating model and accountable to the CFT for the final concept plans and component schedule.

The 3 groups above will be represented on the project team whose role it is to progress the project once the club consultation phase is closed.

Clubs

1-2 representatives per club will sit on the operations committee. The role of this committee is to put policy recommendations relating to the day to day management of the facility to the Fraser Park Sportsville board.

Annual Financial Statements

Profit & Loss

Fraser Park Sportsville Incorporated For the 12 months ended 30 June 2013

	Jun-13	Jun-12
Income		
Council Funding	27,000	2,227
Grant Income	42,526	54,510
Other Income	2,085	6,649
Service Contracts	14,000	18,000
Total Income	85,611	81,386
Gross Profit	85,611	81,386
Less Operating Expenses		
Administration & Personnel	61,458	59,571
Community Programmes	-	5,157
Depreciation	642	752
Insurance - Directors	1,542	1,261
Professional Services	16,150	-
Travel - National	1,862	2,245
Total Operating Expenses	81,655	68,986
Net Profit	3,956	12,400

Notes

This statement is to be read in conjunction with the Notes to the Financial Statements and the accompanying Compilation Report.

Movements in Equity

Fraser Park Sportsville Incorporated As at 30 June 2013

	30 Jun 2013	30 Jun 2012
Equity		
Opening Balance	26,127	13,727
Current Year Earnings	3,956	12,400
Total Equity	30,083	26,127

Notes

This statement is to be read in conjunction with the Notes to the Financial Statements and the accompanying Compilation Report.

Balance Sheet

Fraser Park Sportsville Incorporated As at 30 June 2013

	30 Jun 2013	30 Jun 2012
Assets		
Bank		
Fraser Park Sportsville Inc.	16,723	25,501
Visa Debit Card Account	802	-
Total Bank	17,526	25,501
Current Assets		
Accounts Receivable	5,942	55
Sundry Debtors	6,000	-
Total Current Assets	11,942	55
Fixed Assets		
Accumulated Depreciation	(1,394)	(752)
Website	2,090	2,090
Total Fixed Assets	696	1,338
Total Assets	30,163	26,893
Liabilities		
Current Liabilities		
Grants Received in Advance	-	526
GST	80	241
Total Current Liabilities	80	767
Total Liabilities	80	767
Net Assets	30,083	26,127
Equity		
Current Year Earnings	3,956	12,400
Retained Earnings	26,127	13,727
Total Equity	30,083	26,127

Notes

Signed

This statement is to be read in conjunction with the Notes to the Financial Statements and the accompanying Compilation Report.

Notes to the Financial Statements

Fraser Park Sportsville Incorporated For the year ended 30 June 2013

1. Statement of Accounting Policies

The financial statements presented here are for the entity Fraser Park Sportsville Inc., an Incorporated Society registered under the Incorporated Societies Act 1908.

Fraser Park Sportsville Inc is also registered under the Charities Act 2005, and therefore is exempt from taxation.

Fraser Park Sportsville is a qualifying entity in that it qualifies for Differential Reporting as it is not publicly accountable and is not large as defined under the Framework for differential reporting. All differential reporting exemptions have been applied.

The accounting principles recognised as appropriate for the measurement and reporting of earnings and financial position on a historical cost basis have been used, with the exception of certain items for which specific accounting policies have been identified.

2. Changes in Accounting Policies

There have been no changes in Accounting Policies. All policies have been applied on bases consistent with those used in previous years.

3. Fixed Assets and Depreciation

All fixed assets are recorded at cost less accumulated depreciation.

Depreciation of the assets has been calculated at the maximum rates permitted by the Income Tax Act 2007.

The entity has the following asset classes:

Website. 48% Diminishing Value

4. Goods and Services Tax

These financial statements have been prepared on a GST exclusive basis with the exception of Accounts Receivable and Accounts Payable.

5. Income Tax

As a registered charity, Fraser Park Sportsville Incorporated is exempt from income tax.

6. Accounts Receivable

Receivables are stated at their estimated realisable value. Bad debts are written off in the year in which they are identified.

7. Audit

These financial statements have been subject to audit, please refer to Auditor's Report.

8. Fixed Assets

The entity has the following fixed assets recorded:

Website	696
At cost	2,090
Less Accumulated Depreciation	(1,394)
Total Fixed Assets	696

9. Grant Income

Grant income is recognised in the Statement of Financial Performance at the time at which the expenditure for which the grant was awarded is incurred. Until that time, grant income is held as a liability on the balance sheet as grant income received in advance.

Notes to the Financial Statements

As a community based organisation Fraser Park Sportsville is reliant on the goodwill of the wider community for its continued operation. In addition to the continued support of the Hutt City Council and our Members, we would like to thank the following organisations for their financial support during the 2012/13 year:

New Zealand Community Trust \$25,000
Wellington Community Trust \$5,000
Infinity Foundation \$6,000
New Zealand Community Trust \$6,000

AUDIT REPORT

FRASER PARK SPORTSVILLE

I have audited the accounts for Fraser Park Sportsville for the year ended 30th June 2013 and in my view, based on the information provided to me, they represent a true and accurate statement of the financial position.

Dennis Quirke A.C.M.A
Fraser Park Sportsville Auditor



Phone: 04 560 0340
Email: gm@fpsportsville.org.nz
Website: www.fpsportsville.org.nz
Address: Private Bag 31912
Lower Hutt 5040